



**33 MINERVA STREET**  
GLASGOW

[www.domus-letting.co.uk](http://www.domus-letting.co.uk)







**2 | BEDROOMS**

**2 | BATHROOMS**

**1 | PUBLIC ROOM**

**A bright and spacious two-bedroom apartment set in a modern development in the heart of Finnieston. Ideal for professionals and city commuters, the property offers excellent proportions throughout and generous storage.**

A bright and spacious two-bedroom apartment set in a modern development in the heart of Finnieston. Ideal for professionals and city commuters, the property offers excellent proportions throughout and generous storage.

The open plan kitchen and lounge benefits from floor-to-ceiling windows that flood the space with natural light. The kitchen is fitted with integrated appliances including fridge freezer, washing machine and dishwasher, with a surrounding island that works well for dining and entertaining.

Both bedrooms are doubles. The primary room enjoys built-in wardrobes and a private ensuite shower room. The main bathroom mirrors the style of the ensuite and includes a three-piece suite with bath and overhead shower, along with fitted storage.

Electric heating and double glazing are in place, and the building offers secure entry.





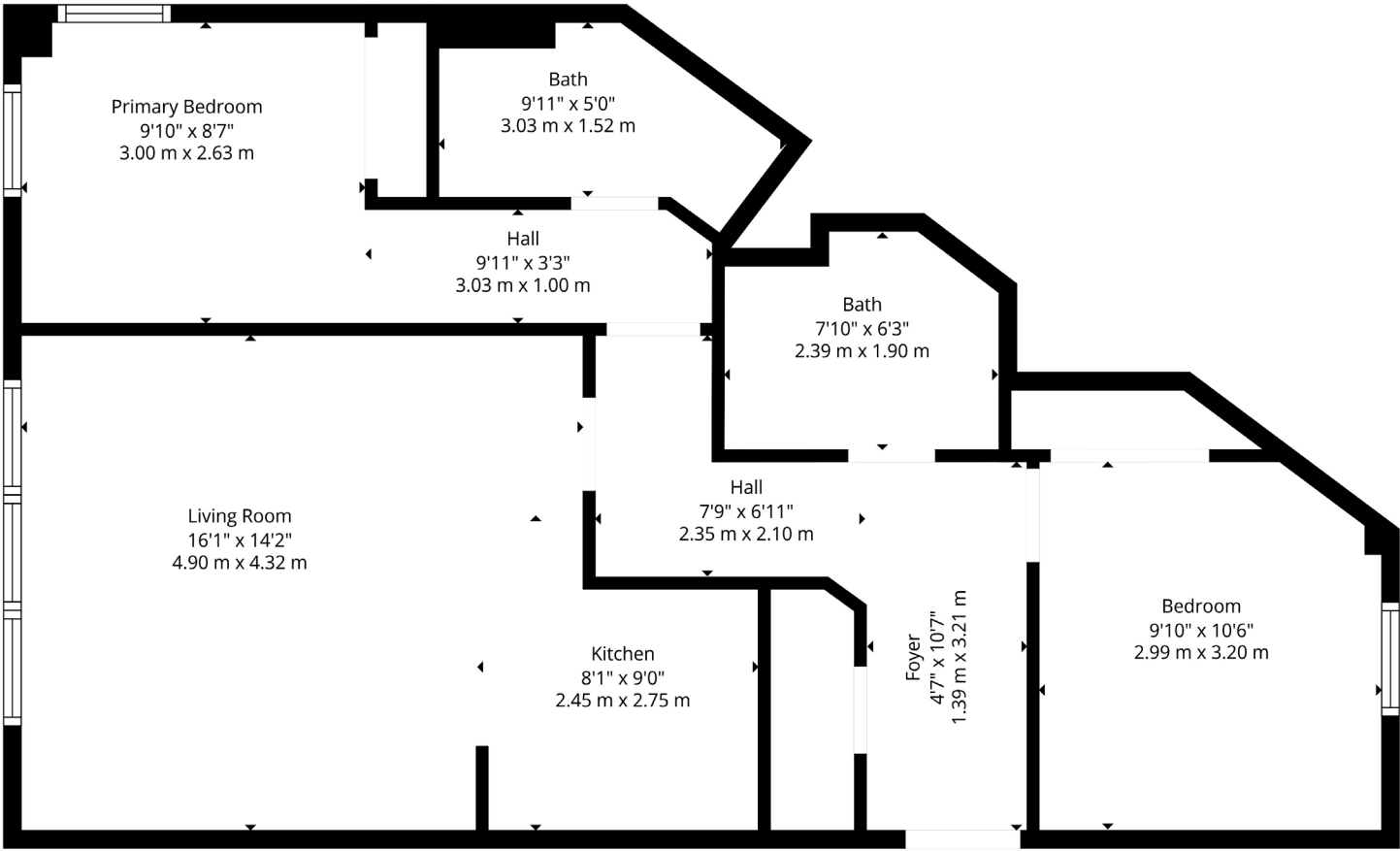












Finnieston has evolved into one of Glasgow's most desirable districts, positioned between the City Centre and the West End. The area is known for its restaurants, cafés and bars while still offering easy access to greenspace.

Kelvingrove Park and Kelvingrove Art Gallery & Museum are within walking distance. Major entertainment venues such as the OVO Hydro, SEC Armadillo and Clyde Auditorium are close by. Exhibition Centre train station is a short walk and road links give quick access to the M8, M74 and Glasgow Airport.

The local area connects well to the University of Glasgow, Glasgow School of Art and Strathclyde University, making it popular with professionals, students and young families.

Viewing is recommended.

Property ID: **39** | Sat Nav: 3/3, 33 Minerva Street, Glasgow, G3 8LE

To find out more about this property, visit [www.domus-letting.co.uk](http://www.domus-letting.co.uk)

\* All measurements and distances are approximate Floorplans are for illustration purposes and may not be to scale.





Domus Letting  
20 Blythswood Square, Glasgow, G2 4BG

**Tel:** 0141 428 4422

**Email:** [lettings@domus-letting.co.uk](mailto:lettings@domus-letting.co.uk)

**[www.domus-letting.co.uk](http://www.domus-letting.co.uk)**

LARN:2409007



*Let with confidence*

[www.domus-letting.co.uk](http://www.domus-letting.co.uk)