



2/1 95 TURNBERRY ROAD
GLASGOW

www.domus-letting.co.uk


domus



2 | BEDROOMS

1 | BATHROOM

1 | PUBLIC ROOM

An impressive two bedroom tenement flat enjoying a prime position in the heart of Hyndland. Set on the preferred first floor, the property offers generous proportions, tasteful finishes and a superb blend of traditional features and modern upgrades.

The accommodation begins with a welcoming reception hall with large walk-in storage. The bay windowed lounge is bright and elegant, featuring original flooring, detailed cornicing and a stylish fireplace. The dining kitchen sits to the rear with a peaceful outlook over greenery and has been fitted with a quality range of units, integrated appliances and metro tiled splashback.

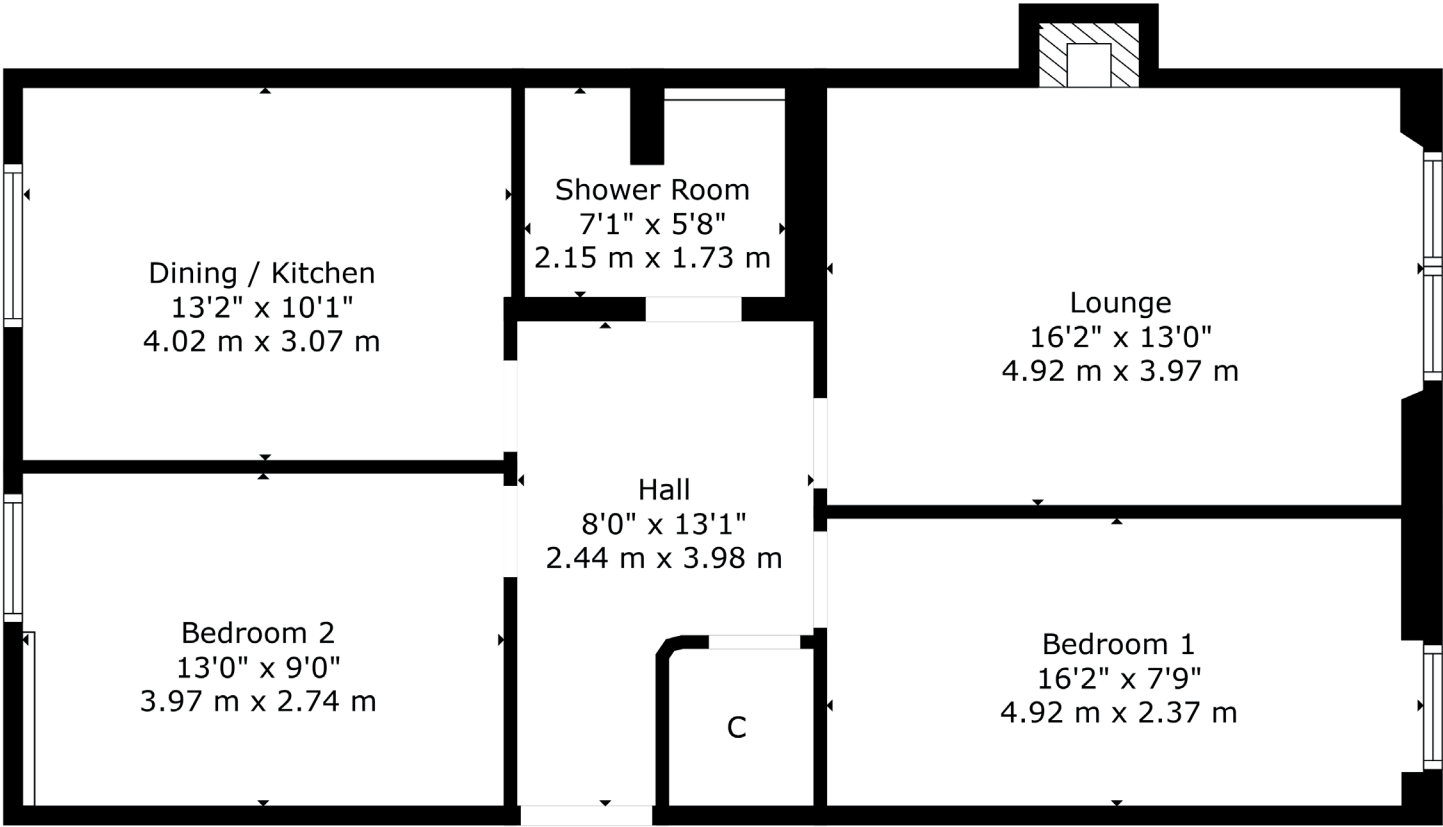
There are two well proportioned double bedrooms, each quietly positioned and freshly decorated. The shower room has been newly upgraded with white metro tiling, blue feature tile and heritage style fittings.

Additional features include gas central heating, double glazing, secure entry and use of a well maintained shared garden to the rear.









Hyndland remains one of the most sought after areas in the West End, known for its tree lined streets, period architecture and excellent local amenities. Hyndland Station is just around the corner and provides direct access to Glasgow city centre. Offered on an unfurnished basis and available for immediate entry. No pets or smokers.

Property ID: **08** | Sat Nav: 8 2/1 95 Turnberry Road, Glasgow, G11 5AS

To find out more about this property, visit www.domus-letting.co.uk

* All measurements and distances are approximate Floorplans are for illustration purposes and may not be to scale.



Domus Letting
20 Blythswood Square, Glasgow, G2 4BG

Tel: 0141 428 4422

Email: lettings@domus-letting.co.uk

www.domus-letting.co.uk

LARN:2409007



Let with confidence

www.domus-letting.co.uk